

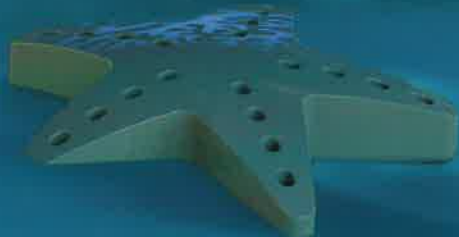
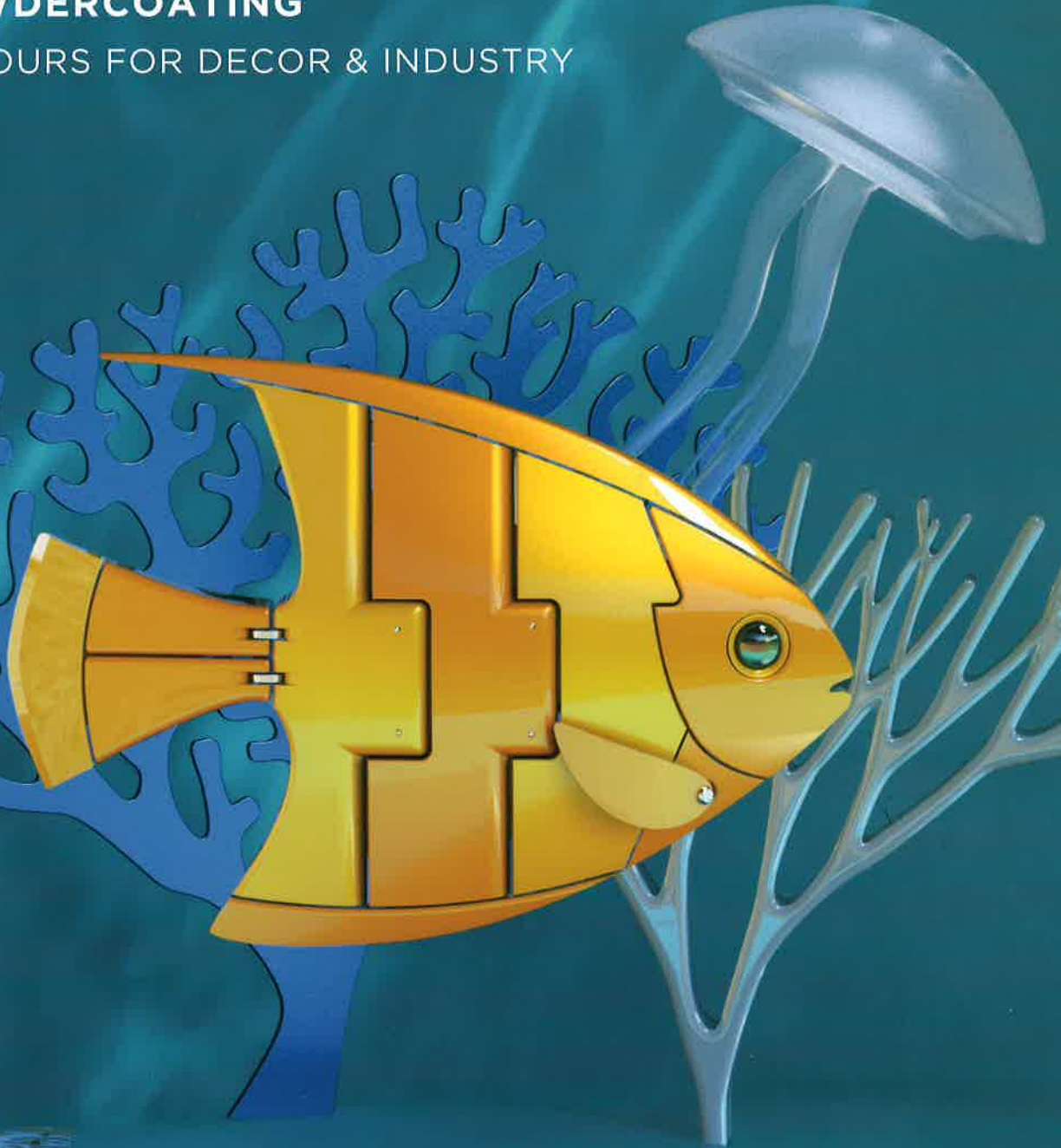
Dulux[®]

POWDER & INDUSTRIAL COATINGS

PACIFIC GOLD

POWDERCOATING

COLOURS FOR DECOR & INDUSTRY



PACIFICGOLD

The Dulux[®] Pacificgold functional and decorative product range.



Antigraffiti AG[™] 912

Antigraffiti AG[™] has been formulated to perform in environments where most other powders would find the going too tough. Dulux[®] Antigraffiti AG[™], as an antigraffiti coating is recommended for use on public transport, street furniture, signs and playground equipment where graffiti is most prominent. Dulux[®] Antigraffiti AG[™] has been used on projects including the Great South Pacific Express and Telecom New Zealand phone boxes.

PacificGold[™] Copol[™] 953

Pacificgold[™] Copol[™] 953 line is a range of polyester epoxy powder coatings and is recommended for use in applications where resistance to general chemicals and reasonable hardness is required. Pacificgold[™] Copol[™] powders are used extensively in shelving for supermarkets and industry, for tapware, automotive sub components and appliances.

PacificGold[™] PG 288[™]

Pacificgold[™] PG288[™] Line is a range of tough polyester powder coatings that may be used on a multitude of metal substrates: from Rubbish Skips to shelving, office furniture to pool fences, whitegoods to garden tools, outdoor furniture to automotive components.

PG288[™] is hardy and durable. The matt and satin finishes are ideal for use on metal areas including shop front frames, commercial furniture and shelving.

Pyrotec[™] 913, 939 & 979

Pyrotec[™] 913, 939 and 979 lines are a range of stock and made to order heat resistant powders called Pyrotec[™] HR (Heat Resistant). The range includes Pyrotec[™] HR180, Pyrotec[™] HR350 and Pyrotec[™] HR500. The Pacificgold[™] Pyrotec[™] HR series are by nature low gloss finishes and are formulated in a textured film finish.

Zincshield[™] Primer 990

Zincshield[™] Primer 990 line is designed to provide additional corrosion inhibition on abrasively blasted steel products. The Zinc component provides sacrificial opportunities to the steel whilst the epoxy resin system provides improved chemical resistance and coating adhesion.



The Dulux® architectural range



Dulux® offer a range of powder coatings designed for use on architectural aluminium joinery and accessories. These powder coatings can also be used over a myriad of substrates and may be used in conjunction with Dulux® Zincshield™ over mild steel. Duralloy®, Duratec® and Electro® all have their own colour cards, featuring a range of stock colours while Fluoroset® FP is a made to order product.



Dulux® Duralloy® is a new high durability performance powder coating that has good scratch resistance properties and an improvement in UV resistance over standard powder coatings. Dulux® Duralloy® has improved appearance, tougher formulation and is available as stock in over 80 fashionable solid and pearlescent colours. See the Duralloy® Colour Guide for additional colours and information.



Dulux® Duratec® is recommended for use on premium residential and commercial developments. Duratec's chemistry ensures good scratch and mar resistance in busy traffic areas within business offices, hospitals and shopping districts.



Fluoroset® FP has been formulated specifically for prestigious architectural applications where superior colour stability, gloss retention, mar resistance and general serviceability is demanded. Fluoroset® FP exceeds the performance of high and super performance polyester powder coatings and is formulated using 100% fluoropolymer resin. As no other resins are incorporated, Fluoroset® FP maintains an intrinsic hardness which makes it extremely suitable for use in high traffic zones irrespective of exposure to sunlight.



The Electro® range is based on high durability polyester technology to produce a tough, very matt yet tactile finish also displaying modern metallic and solid colour effects. In some cases reminiscent of an anodised finish, yet with all the advantages of modern, high durability powder coating. See the Electro® range colour card for colours and additional information.



For additional information or colour cards, call the Dulux Powder & Industrial Coatings Customer Services team on 0800 800 975.

The Pacificgold™ colour range

These colours have been selected to provide an exciting range of finishes principally for industrial applications. These finishes have not been designed for architectural applications and further information should be sought before specifying any of these colours for architectural joinery, cladding or fittings.



Information included in the colour matrix on this colour chart includes an estimation of the expected exterior durability of each colour on a scale of 1 - 5 where 1 is an interior only colour through 5 where the colour is rated very light fast. These values are estimations only and no warranty is attached or expressed.

Each colour has an RGB value for use with computer aided design programs where colour representation is required.

Gloss levels are detailed and range from Matt through Satin to Gloss. Light reflectance values are expressed as percentages where white has a high light reflectance percentage and black, a low light reflectance percentage.

The colours represented on this colour chart are indications only. They are as close to the actual product colours as modern printing processes allow and have been matched to outdoor daylight viewing. The colour appearance may vary according to light source.

Where colour is critical, samples of the actual powder coating should be sought from Dulux Powder & Industrial Coatings.

When specifying these colours, be sure to specify the entire product reference and name. There are many examples of different products having the same name for quite different colours or finishes.



YELLOW



2140S CARTERTON



58863 CREAM



2004S HAPPY



32120 LEMON YELLOW



59623 SCHWEPES YELLOW



33617 YELLOW GOLD



96905 CLOUGH SAFETY YELLOW



2141S HOUHORA

WHITE



58861 ARCTIC WHITE



96914 AG ARCTIC WHITE



97434 PEARL WHITE



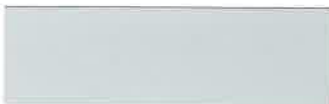
58854 WARM WHITE



58864 CHALK USA



2139G SANDSPIT



58728 SILVER QUILL



7381G GLINKS GULLY

BLUE



58613 SKY



5186S HURSTMERE ROAD



57273 ROYAL BLUE



19990 SPACE BLUE



57262 POMMEL BLUE



58610 DULUX® BLUE



51926 DARK VIOLET



5350S FRENCH BLUE



RED



4056G TICKLE PINK



4155G FLAME RED



58413 BRIGHT RED



50735 SIGNAL RED



56995 COLA RED



57074 WINEBERRY

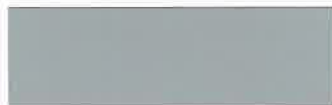


51439 ORANGE X15



4008G TINGLE GLOSS

GREY & PEARL



32786 APO GREY



97488 GREYWACKE



7236K BLAZING SILVER KINETIC®



7380K SILVER 2K KINETIC®



7182K NZ BRIGHT SILVER KINETIC®



7134K NATURAL STEEL KINETIC®



9024S ANTIGRAFFITI BLACK SATIN



58653 HIGH GLOSS BLACK

GREEN



58566 TELECOM GREEN



58571 MISTLETOE



6006S MAMBA GREEN



7382S PENCARROW



6205S MANFEILD



6204S SHOTOVER STREET



57290 HAWTHORN GREEN



81879 DEEP BRUNSWICK GREEN

The colours represented on this chart are as close to the actual product as modern printing techniques allow.

Colour specifications

	Line#	Gloss Level	UV Index	RGB	Light Reflectancy	
YELLOW & ORANGE	2140S Carterton	288	S	3	249,212,100	70
	58863 Cream	288	S	3	211,191,153	54
	2004S Happy	288	S	3	250,213,62	71
	32120 Lemon Yellow	288	G	2	241,214,80	70
	59623 Schweppes Yellow	288	G	2	255,200,9	68
	33617 Yellow Gold	288	G	2	249,169,30	52
	9690S Clough Safety Yellow	288	G	2	241,159,54	44
2141S Houhora	288	S	3	200,155,89	40	
WHITE	58861 Arctic White	288	G	3	235,241,248	89
	96914 AG Arctic White	912	G	5	237,242,248	89
	97434 Pearl White	288	G	3	251,249,240	95
	58854 Warm White	915	S	5	243,244,234	90
	58864 Chalk USA	288	G	3	242,239,224	87
	2139G Sandspit	288	G	3	243,234,214	83
	58728 Silver Quill	288	G	3	204,205,201	64
	7381G Glinks Gully	288	G	3	214,206,191	65
BLUE	58613 Sky	288	G	3	0,124,74	17
	5186S Hurstmere Road	288	S	3	41,88,154	14
	57273 Royal Blue	288	G	3	43,59,105	7
	19990 Space Blue	288	G	3	46,57,115	7
	57262 Pommel Blue	288	G	3	45,94,134	10
	58610 Dulux® Blue	288	S	3	49,58,80	7
	51926 Dark Violet	288	G	3	85,60,113	9
	5350S French Blue	288	S	3	52,103,166	13
RED	4056G Tickle Pink	288	G	2	203,67,106	21
	4155G Flame Red	288	G	2	166,58,60	12
	58413 Bright Red	288	G	2	167,50,49	13
	50735 Signal Red	288	G	2	178,56,44	15
	56995 Cola Red	915	S	5	202,49,54	18
	57074 Wineberry	288	G	2	112,46,51	8
	51439 Orange X15	288	G	2	235,107,52	32
	4008G Tingle Gloss	288	G	3	240,89,28	29
GREY & PEARL	32786 APO Grey	915	S	5	171,172,171	46
	97488 Greywacke	201	S	3	103,110,113	19
	7380K Silver 2K Kinetic®	288	S	4	143,144,141	32
	7182K NZ Bright Silver Kinetic®	288	S	4	153,155,157	38
	7134K Natural Steel Kinetic®	915	S	5	118,120,121	23
	7236K Blazing Silver Kinetic	908	S	3	161,164,163	37
	9024S Antigriffiti Black Satin	912	S	5	58,59,59	4
	58653 High Gloss Black	288	G	3	47,47,47	5
GREEN	58566 Telecom Green	288	G	3	107,167,62	31
	58571 Mistletoe	288	G	3	12,110,60	15
	6006S Mamba Green	288	S	3	125,169,58	38
	7382S Pencarrow	288	S	3	110,124,116	23
	6205S Manfeild	288	S	3	118,145,118	26
	6204S Shotover Street	288	S	3	0,131,72	20
	57290 Hawthorn Green	915	S	5	45,68,57	8
	81879 Deep Brunswick Green	959	G	3	45,62,58	7
SURREAL FX	33641 Mannex White	901	M	3	243,246,241	91
	7462Z Mannex NZ Bright Silver	288	M	3	161,164,164	37
	57289 Cream Ripple	288	G	3	230,222,201	73
	57124 Black Watered Silk	930	M	2	63,63,64	5
	57242 Black Sand Texture	288	M	2	62,62,63	5
	57243 Satin Black Ripple	953	M	1	63,64,64	5
	51677 Graphite Ripple	953	M	1	118,118,117	18
	85180 Black Hammertone	953	G	1	90,91,93	11

SURREAL FX

33641 MANNEX WHITE



7462Z MANNEX NZ BRIGHT SILVER



57289 CREAM RIPPLE



57124 BLACK WATERED SILK



57242 BLACK SAND TEXTURE



57243 SATIN BLACK RIPPLE



51677 GRAPHITE RIPPLE



85180 BLACK HAMMERTONE

UV Index

Very Good	5
Good	4
Moderate	3
Low	2
Interior Only	1

Line # = Chemistry

915	Duralloy polyester
288	PG288 polyester
912	Armourspray EP aka Antigriffiti
908	Dutrim
953	Hybrid

Element

Gloss Level	Gloss Measurement taken @ 60°
Gloss= >75%	Satin 55-75%
Low Sheen 30-55%	Matt = < 30%
RGB	Red, Green & Blue Values
Light Reflectancy	% of Light Reflected by the colour



A major recently completed project by Supreme Paint & Powder of Wellington using PacificGold™ product.



Worth doing, worth Dulux.®

New Zealand

Dulux Powder & Industrial Coatings
 31B Hillside Road
 Glenfield
 Auckland O627
 PO Box 10 1886
 NSMC
 Auckland O745
 New Zealand
 T + 64 9 441 8244
 F + 64 9 441 8242

Australia

Dulux Powder & Industrial Coatings
 1-15 Pound Rd West
 Dandenong South Vic 3175
 T + 61 3 8787 4500
 F + 61 3 8787 4542

Singapore & South East Asia

DGL International
 Powder and Industrial Coatings
 No 100, Pasir Panjang Road,
 #02-10, Singapore 118518

OR VISIT

www.duluxpowdercoatings.co.nz

www.duluxpowders.com.au

www.dglpowders.co.nz

Issue 320018

Dulux, Duralloy, Duratec, Fluoraset, Armourspray, are registered trade marks and Electro, Pacificgold, Zincshield, Copol, PG288, Pyrotec and Clinikill are trade marks of the DuluxGroup (Australia) Pty Ltd.

DISCLAIMER: Any advice, recommendation, information, assistance or service provided by Dulux Powder & Industrial Coatings in relation to goods manufactured by it or their use and application is given in good faith and is believed by Dulux Powder & Industrial Coatings to be appropriate and reliable. However, any advice, recommendation, information, assistance or service provided by Dulux Powder & Industrial Coatings provided without liability or responsibility PROVIDED THAT the foregoing shall not exclude, limit, restrict or modify the right entitlements and remedies conferred upon any person or the liabilities imposed upon Dulux Powder & Industrial Coatings by any condition or warranty implied by applicable legislation, regulation or other Government ordinance voiding or prohibiting such exclusion, limitation or modification.

PACIFICGOLD™

Dulux®
 POWDER & INDUSTRIAL COATINGS