



# ELECTRO™ POWDERCOAT RANGE



The Electro™ range of powder coatings is formulated with durable, UV resistant raw materials that come in a wide range of fashion colours that provide an ultra low sheen, silky, anodised look. Each Electro™ colour has been cleverly designed to subtly change in appearance, as light conditions alter throughout the day. The Electro™ range of powder coatings are suitable for use in a wide variety of climatic conditions from cold to hot, and humid to dry environments and is supported by 20 year durability warranty on pre-treated architectural aluminium when applied by a Dulux® Registered Applicator.

The Electro™ range of powder coatings have

been developed for use on architectural aluminium, including window and door frames, panel work, and other exterior metal features on commercial buildings.

Supported by a 20 year durability warranty on pre-treated architectural aluminium when applied by a Dulux® Registered Applicator

- Suitable for developments further than 10 metres from salt water
- No solvents or emissions
- Durable polyester technology
- Excellent colour retention
- Smooth film appearance

See our Electro Colour card or check on line @ [www.duluxpowdercoatings.co.nz](http://www.duluxpowdercoatings.co.nz)

## Taking care of your powder coated surfaces.

To comply with warranty requirements and to extend the effective life of powder coatings, a very simple regular maintenance program should be implemented.

As a general rule cleaning should take place every six months. In areas where pollutants are more prevalent such as beachfront houses and industrial or geothermal areas, then a cleaning program should be carried out on a more frequent basis ie. every one to three months. The atmospheric pollution, dirt, grime and airborne salt deposits can all accumulate over time and should be removed at regular intervals. Salt deposits especially can exacerbate the damaging effects of ultra violet light.

Three steps to cleaning your powder coating:

1. Carefully remove any loose deposits with a wet sponge.
2. Use a soft brush (non abrasive) and a mild

household detergent solution to remove dust, salt and other deposits.

3. Rinse off with clean fresh water.

### Warning:

In some cases strong solvents are recommended for thinning various types of paints and also for cleaning up mastics and sealants. These are harmful to the extended life of the powder coated surface and should not be used for cleaning purposes.

It is important to note that the damage will not be visible immediately and may take up to 12 months to develop.

Paint splashes or sealants and mastics need to be removed before they cure. The following may be safely used for removal:

Methylated Spirits, Ethyl Alcohol, Isopropanol.

**N.B. This colour card replaces all previous Duratec® Colour Cards.**

Dulux and Other marks followed by ® are registered trademarks. Marks followed by ™ are trademarks.

DISCLAIMER: Any advice, recommendation, information, assistance or service provided by Dulux Powder & Industrial Coatings in relation to goods manufactured by it or their use and application is given in good faith and is believed by Dulux Powder & Industrial Coatings to be appropriate and reliable. However, any advice, recommendation, information, assistance or service provided by Dulux Powder & Industrial Coatings is provided without liability or responsibility PROVIDED THAT the foregoing shall not exclude, limit, restrict or modify the right entitlements and remedies conferred upon any person or the liabilities imposed upon Dulux Powder & Industrial Coatings by any condition or warranty implied by applicable legislation, regulation or other Government ordinance voiding or prohibiting such exclusion, limitation or modification. ©2015



**Worth doing...worth Dulux.®**



### New Zealand

31B Hillside Road  
Glenfield, Auckland 0627  
PO Box 10 1886, N.S.M.C.  
Auckland 0745  
New Zealand  
T + 64 9 441 8244  
F + 64 9 441 8242  
[www.duluxpowdercoatings.co.nz](http://www.duluxpowdercoatings.co.nz)



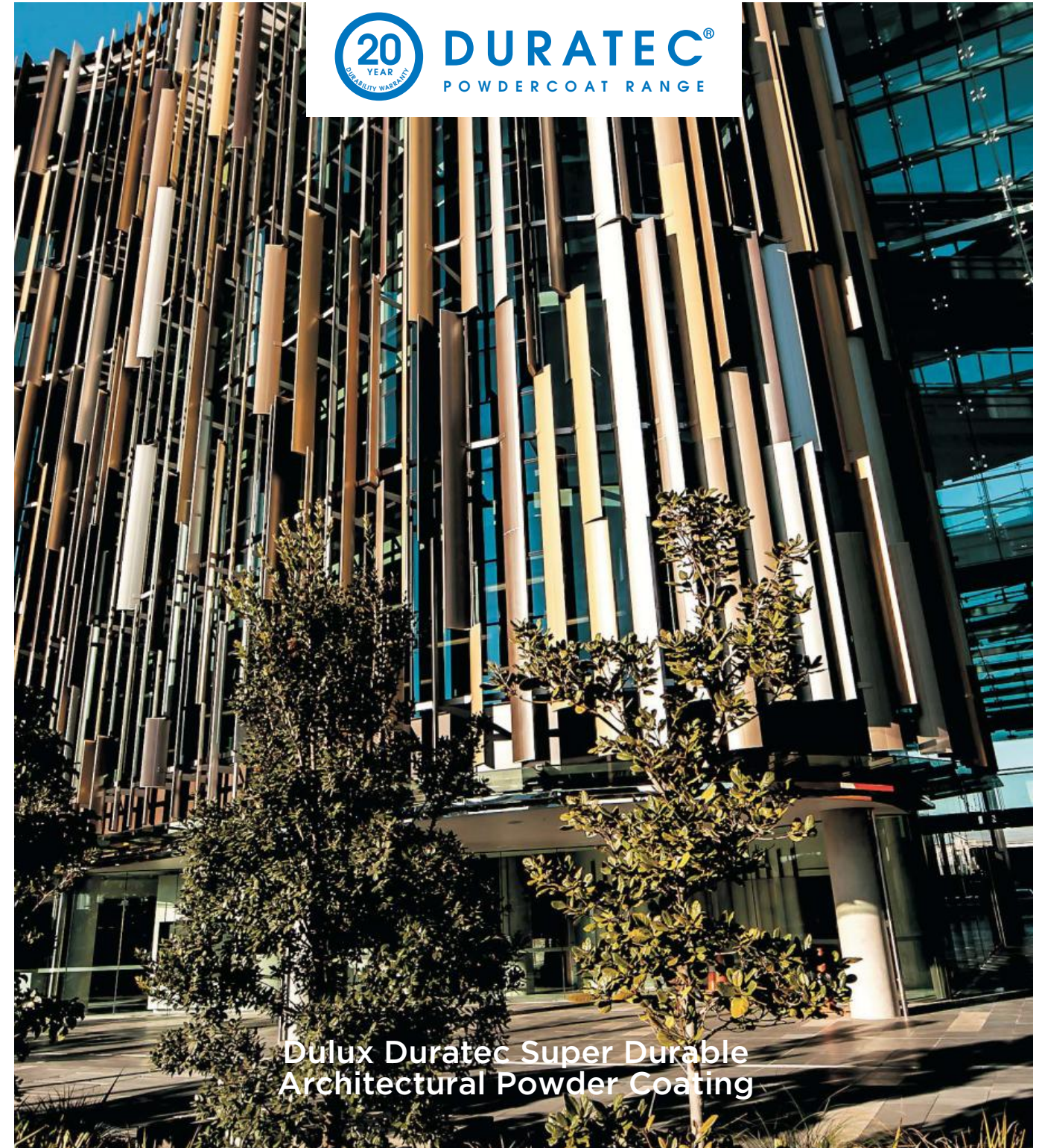
### Australia

Dulux Powder &  
Industrial Coatings  
Australia  
1-15 Pound Rd West  
Dandenong South  
Vic 3175  
Australia  
T + 61 3 8787 4500  
Business Centre  
F + 61 3 8787 4542

Dulux® Duratec® is manufactured by Dulux® Powder & Industrial Coatings under a quality management system certified as meeting the requirements of ISO9001.



**POWDER & INDUSTRIAL COATINGS**



**Dulux Duratec Super Durable  
Architectural Powder Coating**

Duratec **9001274M**  
Matt Appliance White  
LRV 88% RGB 240 241 239

**90058851**  
Duratec Arctic White  
LRV 84% RGB 225 232 239

**9003144M**  
Duratec Matt Off White  
LRV 73% RGB 232 223 200

**9002068M**  
Duratec Matt Titania  
LRV 69% RGB 215 212 200

**9007327M**  
Duratec Matt Canvas Cloth  
LRV 65% RGB 210 205 192

**9003065M**  
Duratec Matt Desert Sand  
LRV 46% RGB 188 170 144

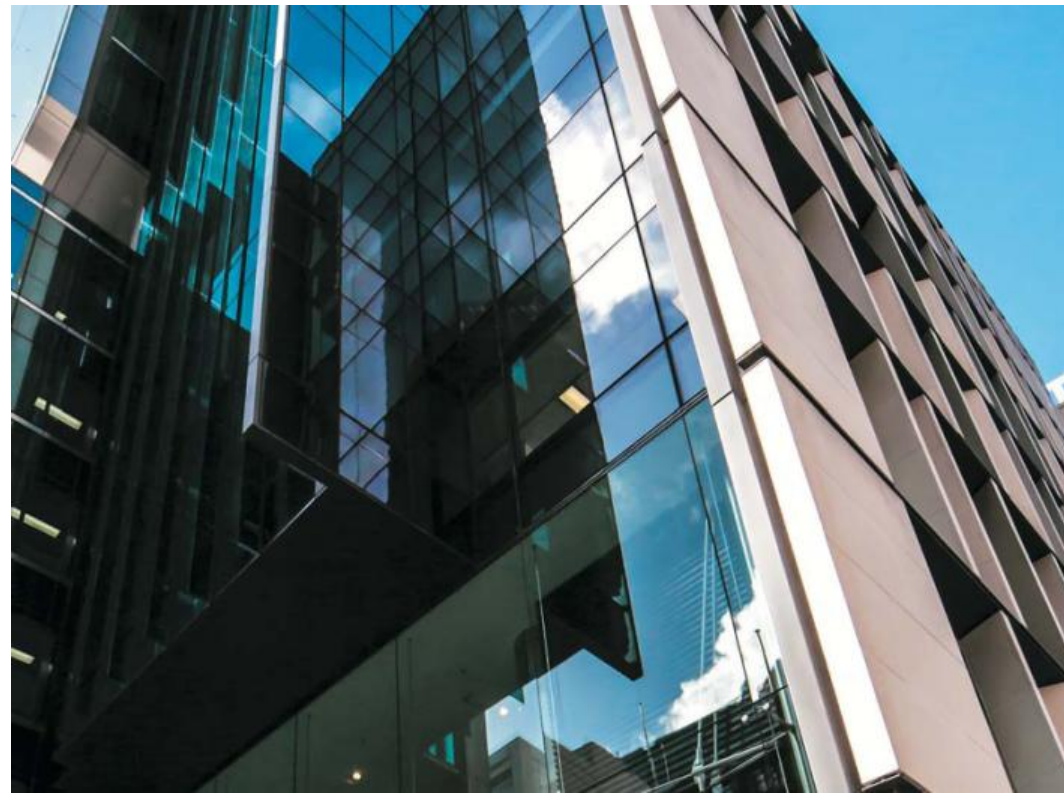
**9002111M**  
Duratec Matt Bronco  
LRV 37% RGB 169 158 143

Duratec **9007183K**  
Copper Metallic Kinetic  
LRV 34% RGB 157 146 136

Duratec **9008115K**  
Gunmetal Metallic Kinetic  
LRV 10% RGB 76 75 71

Duratec **9004007G**  
Intensity Flame Gloss  
LRV 14% RGB 181 44 39

Duratec **9004008G**  
Intensity Summer Gloss  
LRV 27% RGB 229 87 31



## DULUX® DURATEC® premium high durability powder coating.

Duratec® is a super durable powder coating formulated with advanced polyester resin technology, utilising high performance pigments for colour production, designed for architectural aluminium products. Duratec® finds its principal use as a high quality, highly durable coating for aluminium joinery on high rise buildings, although it is also used in areas where the environment is more aggressive than normal.

The recommendations for product specification are as follows:-

Project	Environment	Project
Multistorey Prestigious	Marine	Fluoraset FP®
Multistorey Prestigious	Standard	Fluoraset FP® (or Duratec®/Electro™)
Multistorey Commercial or Industrial	Marine	Duratec®, Electro™ (or Fluoraset FP®)
Multistorey Commercial or Industrial	Standard	Duratec®, Electro™ (or Fluoraset FP®)
Multilevel Building under 3 Levels	Marine	Duratec®, Electro™ (or Fluoraset FP®)
Multilevel Building under 3 Levels	Standard	Duratec®, Electro™ (or Duralloy®)
Educational-School Single Level	Marine	Duratec®, Electro™ (or Fluoraset FP®)
Educational-School Single Level	Standard	Duralloy® (or Duratec®/Electro™)
Residential-Prestigious	Marine-Severe	Fluoraset FP®
Residential	Marine	Duratec®, Electro™ (or Fluoraset FP®)
Residential	Standard	Duralloy®



**9007317K** Duratec  
Metropolis Silver Pearl Kinetic  
LRV 47% RGB 174 174 172

**9007160K** Duratec  
Eternity Silver Pearl Kinetic  
LRV 38% RGB 153 157 159

**90088396** Duratec  
Eternity Pewter Pearl  
LRV 27% RGB 127 131 131

**9008068K** Duratec  
Window Bronze Kinetic  
LRV 10% RGB 79 73 69

**9005063M**  
Duratec Matt New Denim Blue  
LRV 11% RGB 72 78 87

**9007167M**  
Duratec Matt Grey Friars  
LRV 10% RGB 71 74 77

**90097181**  
Duratec Matt Black  
LRV 04% RGB 43 43 44

**9003059K** Duratec  
Matt Champagne Kinetic  
LRV 35% RGB 156 146 136

**9007210K**  
Duratec Oceans 12 Kinetic  
LRV 28% RGB 126 136 127

**9002004S**  
Duratec Intensity Moonlight  
LRV 67% RGB 239 208 65

**9002084G** Duratec  
Intensity Sunshine Gloss  
LRV 52% RGB 233 174 53



More than 25 years coating history of Duratec® may be seen amongst the high rise buildings of the Auckland CBD. Duratec® may be seen on all sorts of buildings in all sorts of atmospheric environments. From Sydney to Singapore, Indonesia to Malaysia, fine examples of buildings with Duratec® coated joinery provide testament to Duratec's durability.

Duratec® is available in 33 colours held in stock in New Zealand. Duratec® may also be made to order in a wide range of colours, with most of the Duralloy® colours featured in the Duralloy® colour guide able to be formulated in Duratec® and manufactured for a specific project. Colours made to order do require minimum volumes to be manufactured.

Duratec® exceeds the international AAMA 2604 specification and may be supported by a performance warranty of 20 years film integrity and up to 15 years colour integrity.

We have now introduced the Intensity range to our stock Duratec® Colours. This range is becoming increasingly popular for contrast trims, in hospitals and schools, where bright colours enhance the environment.

Please take the time to check an actual powder coated sample of the colour of your choice.

For technical reasons associated with colour reproduction the colours shown give only an indication of the shade. No guarantee can be given that they will exactly match the powder product.

**9001173K** Duratec  
Warm White Pearl Kinetic  
LRV 88% RGB 239 240 230

**9007335K**  
Duratec Silver Star Kinetic  
LRV 35% RGB 148 151 150

**9007217M** Duratec  
Matt Sandstone Grey  
LRV 25% RGB 125 125 123

**9008153K** Duratec Matt  
Metro Electric Cow Kinetic  
LRV 09% RGB 71 70 68

**9008109M**  
Duratec Matt Ironsand  
LRV 08% RGB 65 63 61

**9009100K** Duratec  
Metropolis Coal Dust Kinetic  
LRV 08% RGB 61 63 63

**9009081M**  
Duratec Matt Charcoal  
LRV 08% RGB 61 64 67

**9007208K** Duratec  
St Elmos Fire Kinetic  
LRV 34% RGB 145 147 148

**9007214K**  
Duratec Platypus Kinetic  
LRV 30% RGB 141 137 131

**9005011G** Duratec  
Intensity Reef Gloss  
LRV 18% RGB 40 108 181

**9006167S**  
Duratec Intensity Leaf  
LRV 24% RGB 74 138 64